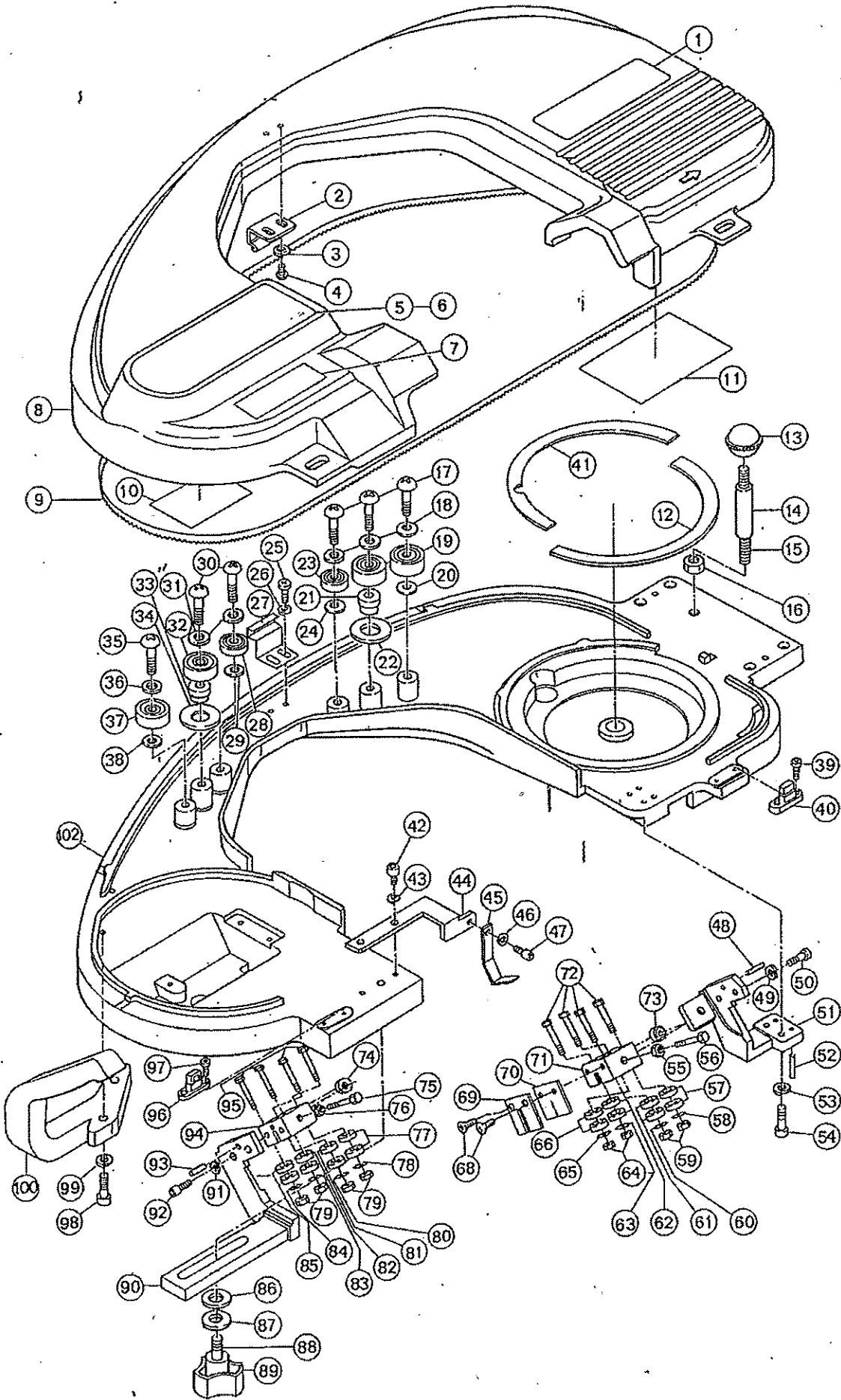


MODEL BAND SAW BEAVER 6/6F BLADE GUIDE & FRAME

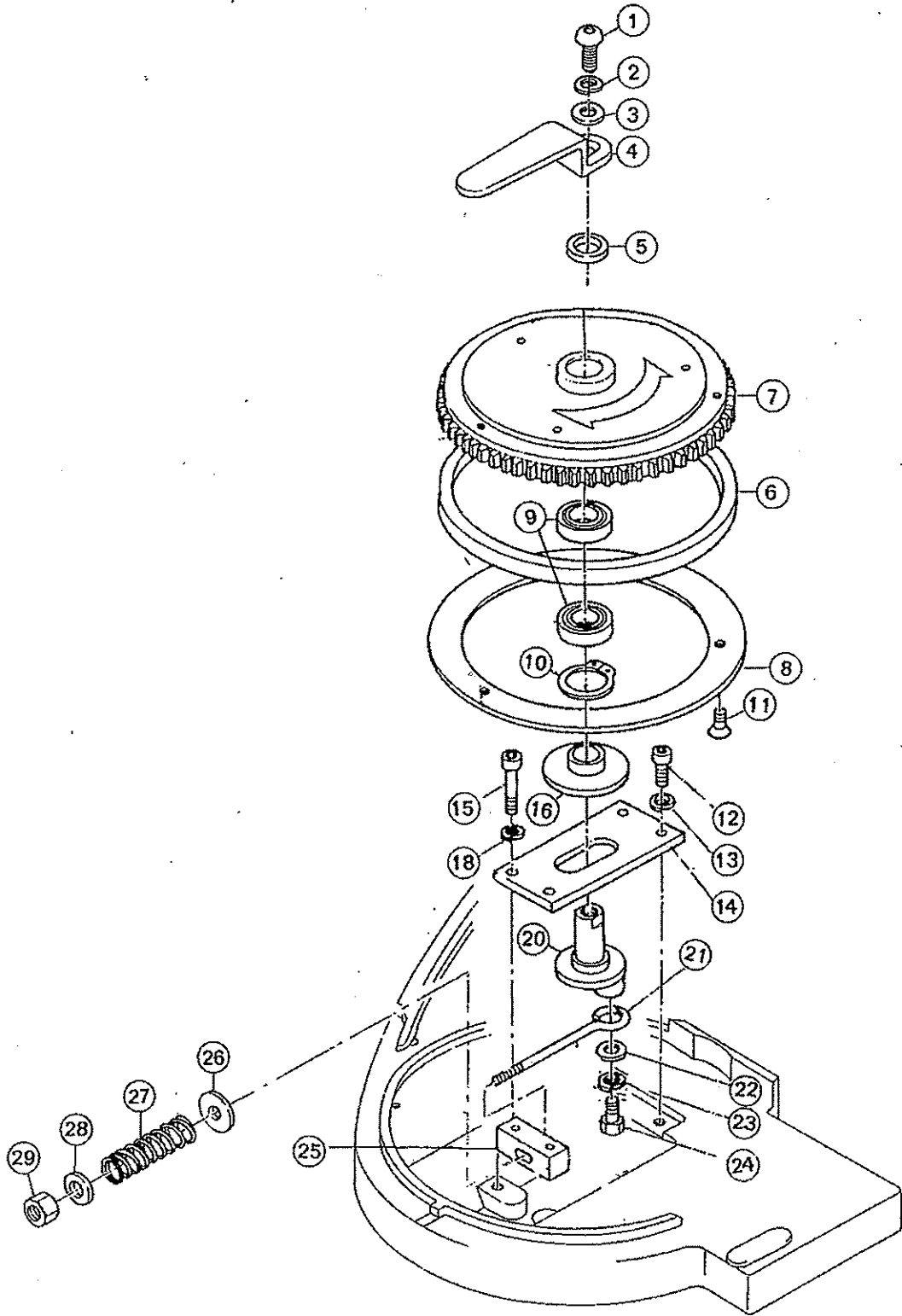


BLADE GUIDE & FRAME

NO.	CODE	PARTS NAME	QTY
1	BB008	ASADA STICKER	1
2	BS383	COVER HOOK A	1
3	82195	PAN-HEAD SCREW 5 X 10	2
4	81125	SPRING WASHER 5	2
5	BB007	STICKER FOR BB6	1
6	BB106	STICKER FOR BB6F	1
7	BB047	WARNING STICKER	1
8	BB006	FRONT COVER	1
9	70114	SAW BLADE 14TPI HSS	1
10	BB046	INSTRUCTION STICKER	1
11	BB048	ADJUSTMENT STICKER	1
12	BS053	CHIP GUARD B	1
13	70612	PLASTIC BALL PB3010	1
14	85405	PROTECTION TUBE 10 X 12	1
15	70629	LONG SCREW 10 X 90	1
16	81088	HEX NUT 10	1
17	82302	BUTTON SCREW	3
18	70150	ROUND WASHER 10	3
19	84170	BALL BEARING 6200ZZ	2
20	70150	ROUND WASHER 10	1
21	BS422	BEARING COLLAR	1
22	BB031	BLADE SET COLLAR	1
23	84113	BALL BEARING 6000ZZ	1
24	70150	ROUND WASHER 10	1
25	82201	PAN-HEAD SCREW 6 X 10	2
26	81118	SPRING WASHER 6	2
27	BB004	COVER HOOK B	1
28	84113	BALL BEARING 6000ZZ	1
29	70150	ROUND WASHER 10	1
30	82317	BUTTON SCREW 10 X 35	2
31	70150	ROUND WASHER 10	2
32	84170	BALL BEARING 6200ZZ	1
33	BS422	BEARING COLLAR	1
34	BB031	BLADE SET COLLAR	1
35	82302	BUTTON SCREW 10 X 30	1
36	70150	ROUND WASHER 10	1
37	84170	BALL BEARING 6200ZZ	1
38	70150	ROUND WASHER 10	1
39	82968	TAPPING SCREW 4 X 6	2
40	70570	COVER STOPPER TL-2	1
41	BS086	CHIP GUARD A	1
42	80161	HEX BOLT 6 X 10	2
43	70152	PLATE WASHER 6	2
44	BS407	DOCK PLATE	1
45	BS302	DOCK	1
46	81238	WASHER 5	1
47	80156	STOP BOLT 5 X 8	1
48	83107	SPRING PIN 5 X 15	1
49	81113	SPRING WASHER 6	2
50	80166	HEX BOLT 6 X 20	2
51	BS332	BLADE GUIDE R	1
52	83023	SPRING PIN 5 X 25	2
53	81113	SPRING WASHER 6	2
54	80167	HEX BOLT 6 X 25	2
55	81008	HEX NUT 6 (LOCK NUT)	1
56	BS331	BACK-GUIDE PIN (ADJUSTMENT BOLT)	1
57	84416	BALL BEARING 625ZZ (BLADE STOPPER BALL BEARING)	2
58	70149	ROUND WASHER 5	1
59	81068	U NUT 5	2

BLADE GUIDE & FRAME

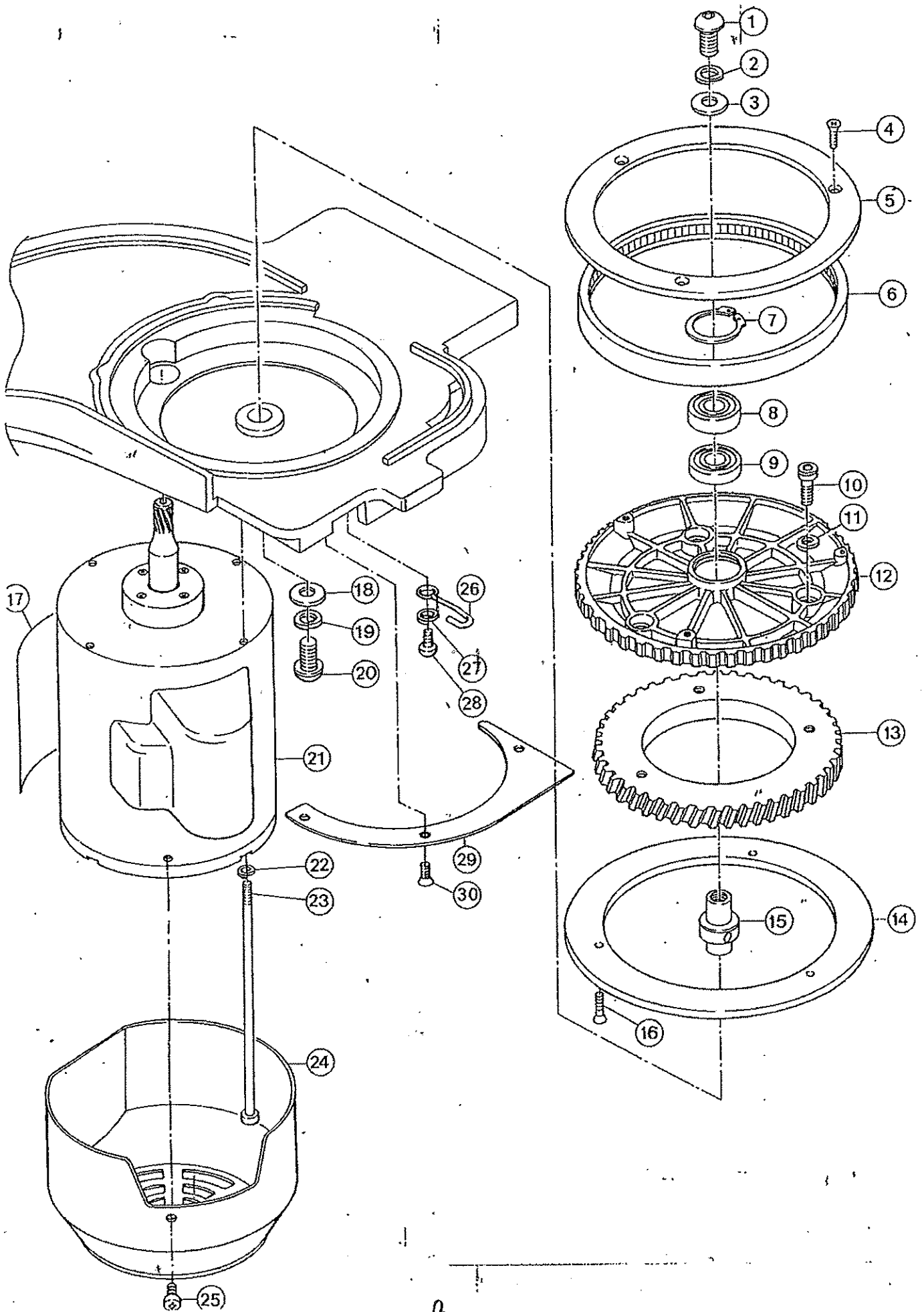
NO.	CODE	PARTS NAME	QTY
60	70149	ROUND WASHER 5	1
61	84416	BALL BEARING 625ZZ (BLADE STOPPER BALL BEARING)	2
62	84416	BALL BEARING 625ZZ (BLADE STOPPER BALL BEARING)	2
63	70149	ROUND WASHER 5	1
64	81068	U NUT 5	2
65	70149	ROUND WASHER 5	1
66	84416	BALL BEARING 625ZZ (BLADE STOPPER BALL BEARING)	2
68	82282	PAN-HEAD SCREW 5 X 8	2
69	BB021	SCRAPER PLATE	1
70	BB022	SCRAPER RUBBER	1
71	BS333	BLADE GUIDE HEAD R	1
72	BS334	GUIDE PIN	4
73	84146	BALL BEARING 605ZZ (BLADE STOPPER BALL BEARING)	1
74	84146	BALL BEARING 605ZZ (BLADE STOPPER BALL BEARING)	1
75	BS331	BACK-GUIDE PIN (ADJUSTMENT BOLT)	1
76	81008	HEX NUT 6 (LOCK NUT)	1
77	84416	BALL BEARING 625ZZ (BLADE STOPPER BALL BEARING)	2
78	70149	ROUND WASHER 5	1
79	81068	U NUT 5	4
80	70149	ROUND WASHER 5	1
81	84416	BALL BEARING 625ZZ (BLADE STOPPER BALL BEARING)	2
82	84416	BALL BEARING 625ZZ (BLADE STOPPER BALL BEARING)	2
83	70149	ROUND WASHER 5	1
84	70149	ROUND WASHER 5	1
85	84416	BALL BEARING 625ZZ (BLADE STOPPER BALL BEARING)	2
86	01127	DIE-NUT WASHER	1
87	81226	WASHER 10	1
88	80056	HEX BOLT 10 X 35	1
89	70573	GUIDE KNOB SS47	1
90	BS338	BLADE GUIDE HEAD F	1
91	81113	SPRING WASHER 6	2
92	80166	HEX BOLT 6 X 20	2
93	83107	SPRING PIN 5x15	1
94	BS339	BLADE GUIDE HEAD F	1
95	BS334	GUIDE PIN	4
96	70570	COVER STOPPER TL-2	1
97	82968	TAPPING SCREW 4 X 6	2
98	82335	PAN-HEAD SCREW 6 X 25	2
99	81251	PLATE WASHER 6	2
100	BS028	HANDLE	1
102	BB002	FRAME	1
SET	BB005	FRONT COVER COMPLETE FOR BB6 (1-5, 8, 10, 11)	1
SET	BB105	FRONT COVER COMPLETE FOR BB6F (1-4, 6, 8, 10, 11)	1
SET	BB020	SCRAPER COMPLETE (69, 70)	1



TENSION

NO.	CODE	PARTS NAME	QTY
1	82253	BUTTON BOLT 8 X 20	1
2	81114	SPRING WASHER 8	1
3	81236	WASHER 8	1
4	BS284	TENSION HANDLE	1
5	BS282	HANDLE COLLAR	1
6	BS532	PULLEY RUBBER	1
7	BS666	FOLLOWING PULLEY	1
8	BS545	PULLEY BLADE SUPPORT	1
9	84115	BALL BEARING 6002ZZ	2
10	83335	SNAP-RING IRTW32	1
11	82287	CAP SCREW 4 X 16	3
12	80166	HEX BOLT 6 X 20	2
13	81113	SPRING WASHER 6	2
14	BS033	TENSION GUIDE	1
15	80170	HEX BOLT 6 X 40	2
16	BS281	PULLEY COLLAR	1
18	81113	SPRING WASHER 6	2
20	BS035	TENSION CAM	1
21	BS036	TENSION BOLT	1
22	81226	WASHER 10	1
23	81115	SPRING WASHER 10	1
24	80464	HEX BOLT 10 X 12	1
25	BS034	TENSION BLOCK	1
27	70626	SPRING	1
28	MN115	MN WASHER	1
29	81067	U NUT 8	1
SET	BS005	FOLLOWING PULLEY COMPLETE (6-11)	1

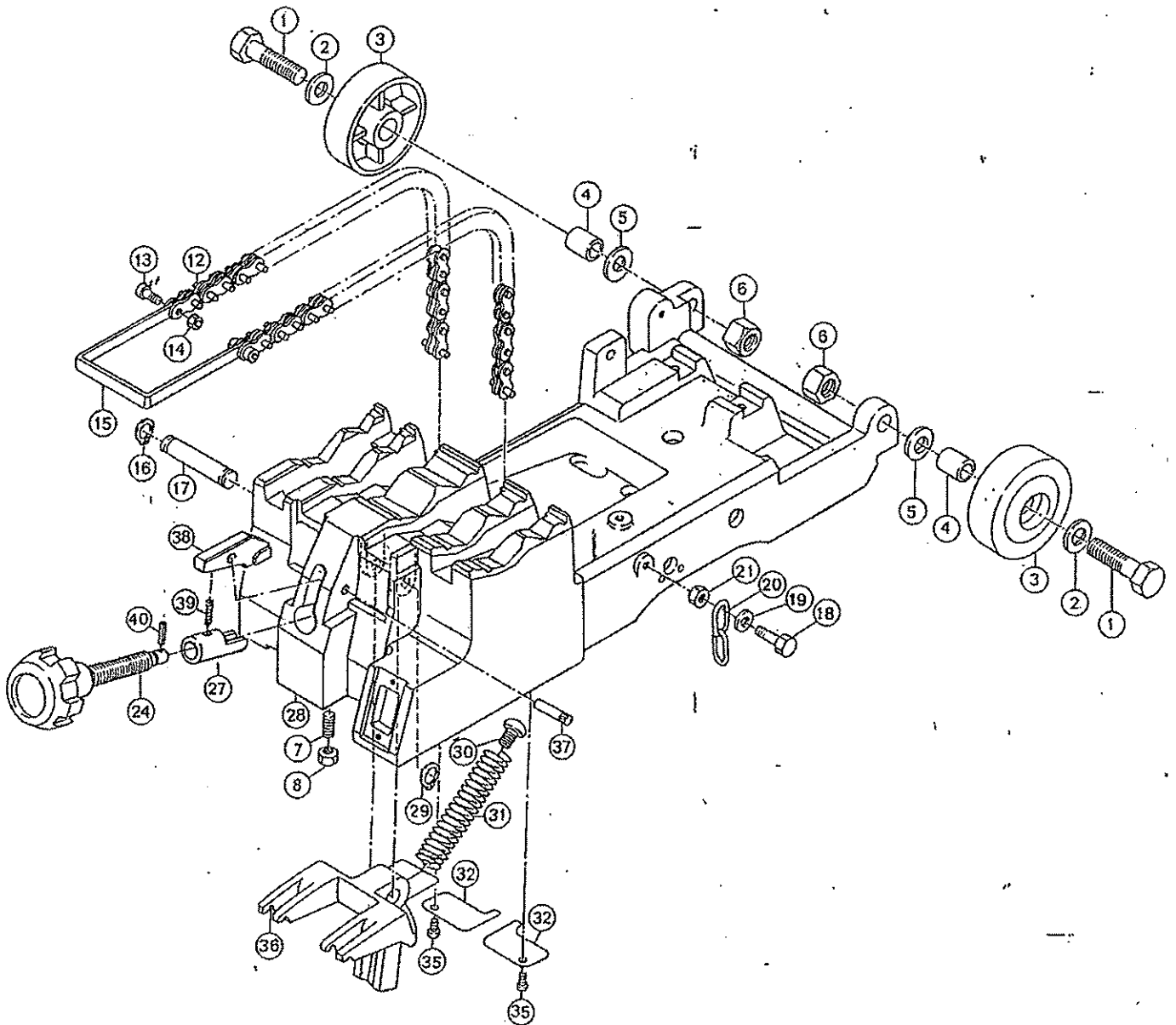
MODEL BAND SAW BEAVER 6/6F DRIVING DEVICE



DRIVING DEVICE

NO.	CODE	PARTS NAME	QTY
1	82257	BUTTON BOLT 10 X 20	1
2	81115	SPRING WASHER 10	1
3	81226	WASHER 10	1
4	82301	BUTTON BOLT 6 X 18	3
5	BS447	BLADE SUPPORT FOR PULLEY	1
6	BS532	PULLEY RUBBER	1
7	83335	SNAP-RING IRTW32	1
8	84115	BALL BEARING 6002ZZ	1
9	84115	BALL BEARING 6002ZZ	1
10	80166	HEX BOLT 6 X 20	3
11	81118	SPRING WASHER 6	6
12	BS419	DRIVING PULLEY	1
13	BS329	DRIVING GEAR	1
14	BS280	BLADE SUPPORT	1
15	34139	PULLEY SHAFT	1
16	82287	CAP SCREW 4 X 16	3
17	BB045	LOAD ADJUST STICKER	1
18	81226	WASHER 10	1
19	81115	SPRING WASHER 10	1
20	82257	BUTTON BOLT 10 X 20	1
21	BB013	MOTOR 100V COMPLETE (17, 21-25/SET)	1
21	BB059	MOTOR 110V COMPLETE (17, 21-25/SET)	1
21	BB060	MOTOR 220/230V COMPLETE (17, 21-25/SET)	1
22	81125	SPRING WASHER 5	4
23	82966	PAN-HEAD SCREW 5 X 175	4
24	BS753	MOTOR COVER	1
25	82979	TAPPING SCREW	1
26	BS524	CHAIN HOOK	1
27	81114	SPRING WASHER 8	1
28	82252	BUTTON BOLT 8 X 18	1
29	BB017	GUIDE PLATE	1
30	82201	PAN-HEAD SCREW 6 X 10	3
SET	BS003	DRIVING PULLEY COMPLETE (1-16)	1

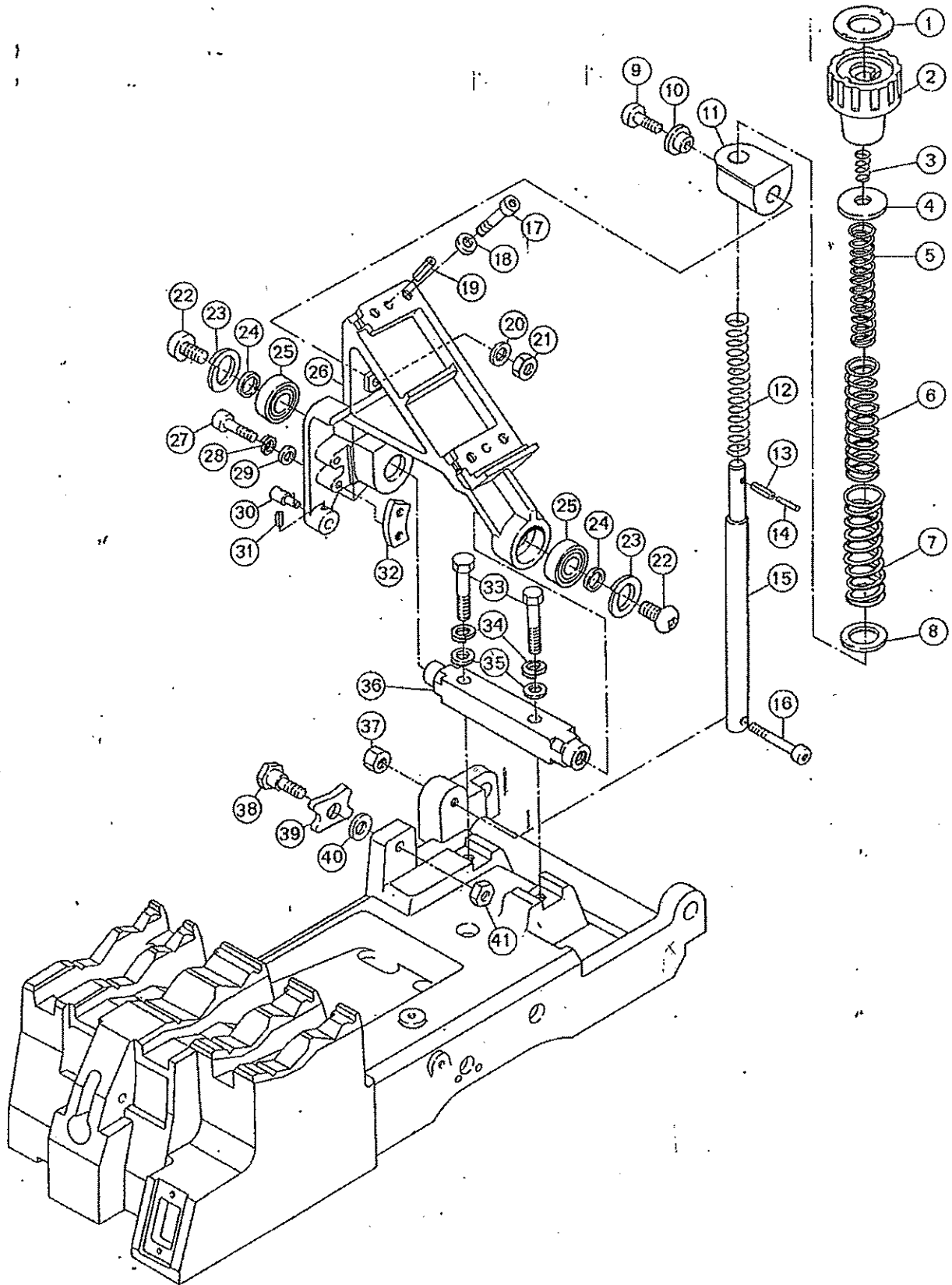
MODEL BAND SAW BEAVER 6/6F CHAIN VISE



CHAIN VISE

NO.	CODE NO.	PARTS NAME	QTY
1	80125	STOP BOLT 16 X 65	2
2	81153	WASHER 16	2
3	BS291	CASTER	2
4	BS292	CASTER COLLAR	2
5	81153	WASHER 16	2
6	81087	U NUT 16	2
7	80416	HEX SCREW 6 X 25	1
8	81008	HEX NUT 6	1
12	BS303	CHAIN	2
13	80158	HEX BOLT 5 X 15	1
14	81068	U NUT 5	1
15	BS261	CHAIN HANDLE	1
16	83304	SNAP-RING C S-15	1
17	34422	CLAMP ROD	1
18	45473	STOP BOLT	1
19	81147	WASHER 8	1
20	70204	HOOK CHAIN	1
21	81063	HEX NUT 8	1
24	BS014	CLAMP KNOB COMPLETE	1
27	BB025	GUIDE BUSH	1
28	BB024	CHAIN VISE BODY	1
29	83304	SNAP-RING C S-15	1
30	82212	PAN-HEAD SCREW 8 X 15	1
31	BS382	CLAMPER SPRING	1
32	BS392	CHAIN SUPPORT PLATE	2
35	82201	PAN-HEAD SCREW 6 X 10	2
36	BS048	CLAMPER	1
37	45732	PIN	1
38	BB070	CLAMP BOLT GUIDE	1
39	BB026	SPRING	1
40	83020	SPRING PIN 5 X 20	1
SET	BS258	CHAIN COMPLETE (12-15)	1

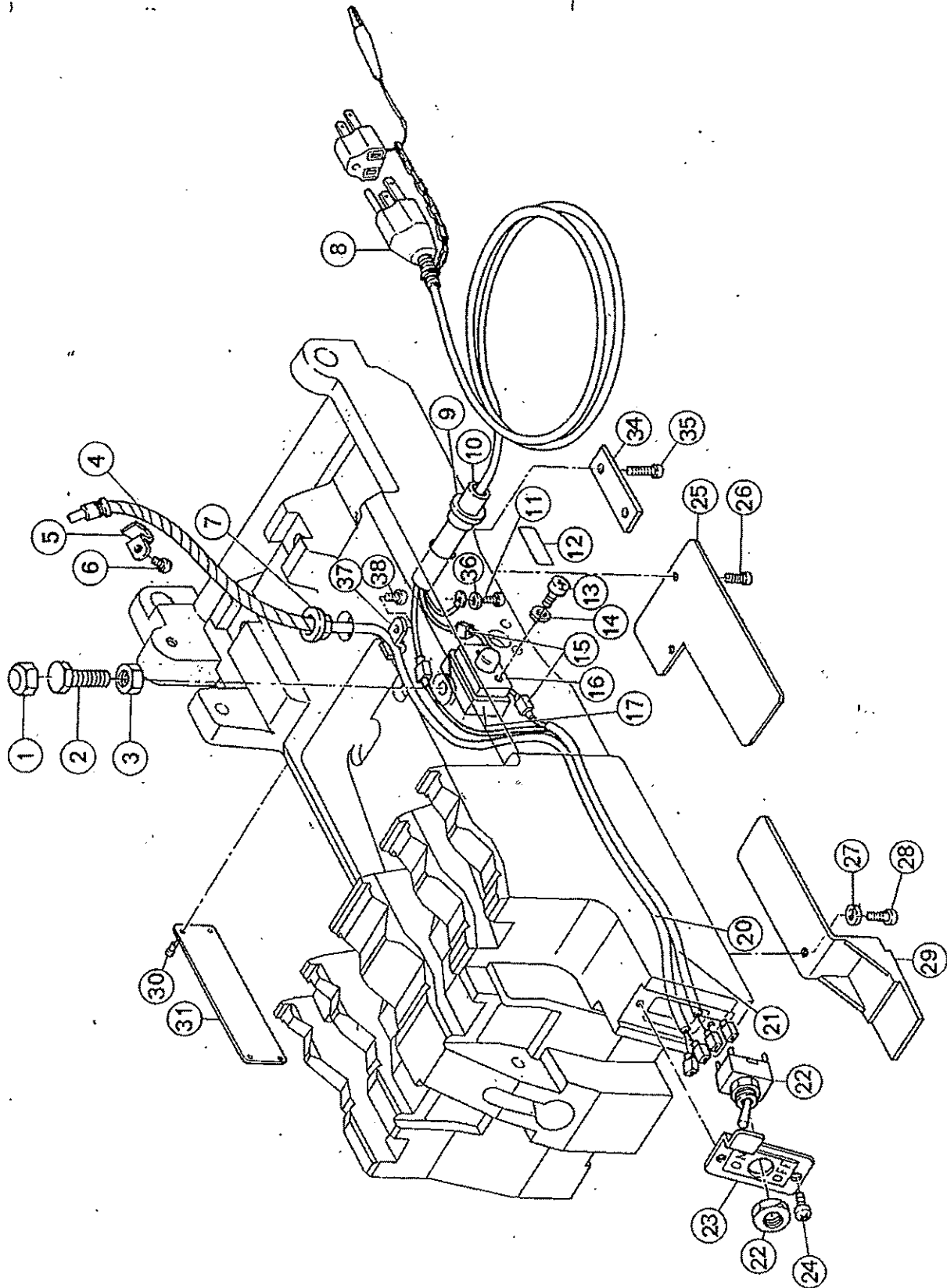
MODEL BAND SAW BEAVER 6/6F ADJUSTMENT SYSTEM (CHAIN VISE)



ADJUSTMENT SYSTEM (CHAIN VISE)

NO.	CODE NO.	PARTS NAME	QTY
1	BB032	ADJUSTMENT KNOB STICKER	1
2	BS322	ADJUSTMENT KNOB	1
3	BS287	ADJUSTMENT KNOB SET SPRING	1
4	BB068	SPRING STOPPER	1
5	BB034	INNER SPRING	1
6	BB035	MIDDLE SPRING	1
7	BB033	OUTER SPRING	1
8	BB041	SPRING STOPPER	1
9	82317	HEX BOLT 10 X 35	1
10	BB039	BRACKET COLLAR	1
11	BB011	SLIDE ROD BRACKET	1
12	BS089	SPRING STOPPER	1
13	83035	SPRING PIN 6 X 18	1
14	83067	SPRING PIN 3.5 X 12	1
15	BS286	SLIDE ROD	1
16	80182	HEX BOLT 8 X 45	1
17	80178	HEX BOLT 8 X 25	4
18	81249	SPRING WASHER 8	4
19	83082	SPRING PIN 5 X 35	2
20	70150	WASHER 10	1
21	81024	HEX NUT 10	1
22	82257	HEX BOLT 10 X 20	2
23	81115	SPRING WASHER 10	2
24	81149	WASHER 10	2
25	84136	BALL BEARING 6003ZZ	2
26	BB009	SHAFT SUPPORT	1
27	80169	HEX BOLT 6 X 35	2
28	81113	SPRING WASHER 6	2
29	81225	WASHER 6	2
30	BB010	STOPPER PIN	1
31	83015	SPRING PIN 4 X 20	1
32	BS309	CURB PLATE	1
33	80060	STOP BOLT 10 X 55	2
34	81115	SPRING WSHER 10	2
35	81149	WASHER 10	2
36	BB012	DATUM SHAFT	1
37	81064	HEX NUT 8	1
38	BS056	STOPPER BOLT	1
39	BS055	STOPPER	1
40	BS057	STOPPER COLLAR	1
41	81041	U NUT 10	1

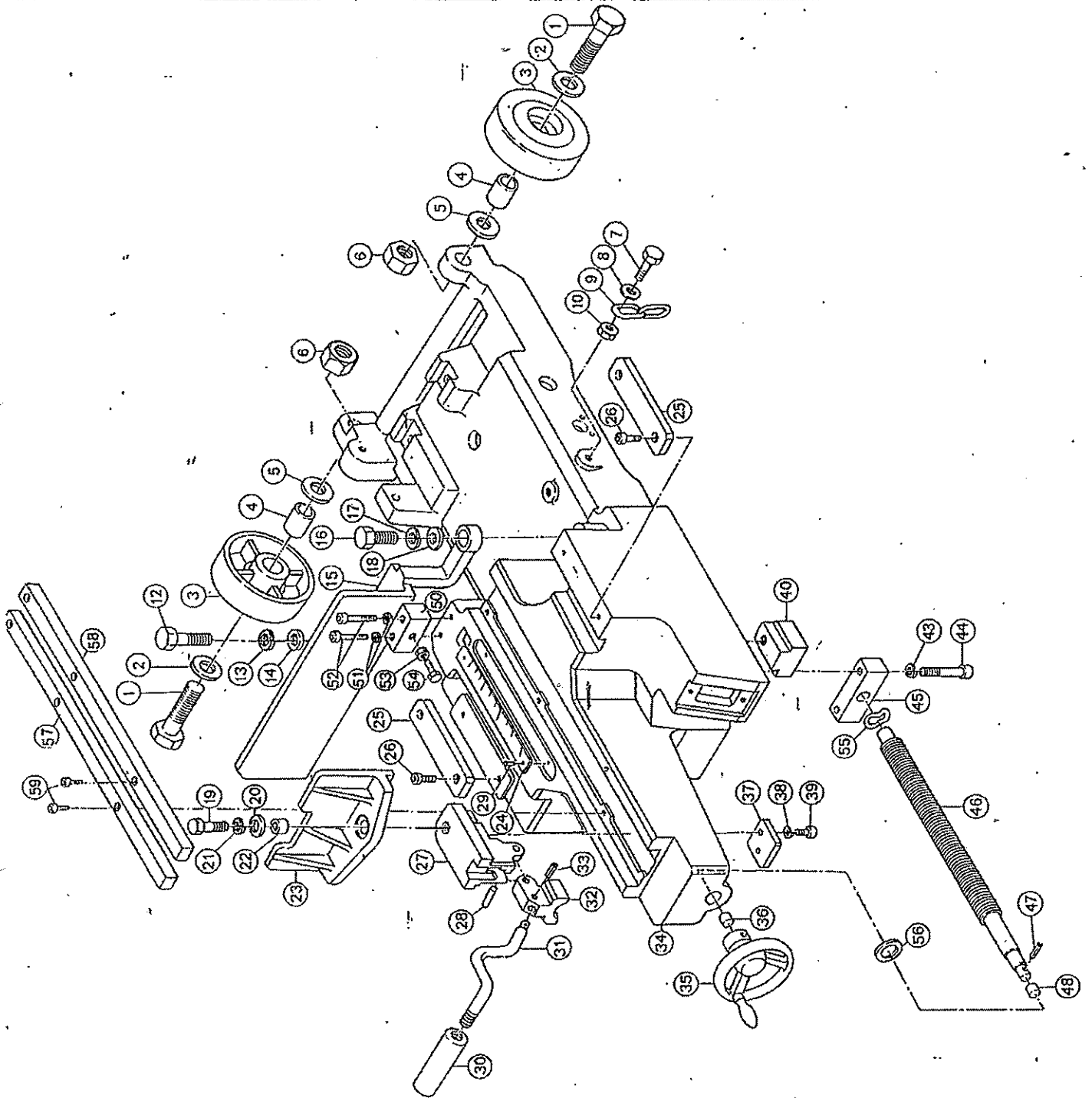
MODEL BAND SAW BEAVER 6/6F SWITCH (CHAIN VISE)



SWITCH (CHAIN VISE)

NO.	CODE NO.	PARTS NAME	QTY
1	BS051	STOPPER RUBBER	1
2	80055	STOP BOLT 10 X 30	1
3	81024	HEX NUT 10	1
4	85469	SPIRAL TUBE TP-9	1
5	19722	TUBE HOOK	1
6	82201	PAN HEAD SCREW 6 X 10	1
7	70605	BUSHING NB15	1
8	BB028	POWER CORD	1
9	70605	BUSHING NB15	1
10	85409	VINYL HOSE 12-14	1
11	88899	PAN HEAD SCREW 6 X 8	1
12	BS341	RESET BUTTON STICKER	1
13	82177	PAN HEAD SCREW 4 X 12	2
14	81111	SPRING WASHER 4	2
15	BS370	LEAD	2
16	87707	OVERLOAD PROTECTOR	1
17	BS285	PROTECTOR COVER	1
20	BB027	SWITCH CORD	1
21	BS368	PROTECTOR CORD	1
22	87178	SWITCH	1
23	BS364	SWITCH PLATE	1
24	82201	PAN HEAD SCREW 6 X 10	2
25	BS436	PROTECTOR BACK PLATE	1
26	82201	PAN HEAD SCREW 6 X 10	3
27	81155	WASHER 6	1
28	82201	PAN HEAD SCREW 6 X 10	1
29	BS327	SWITCH BACK PLATE	1
30	83352	PLATE TACK 2 X 4.8	4
31	BB044	MACHINE PLATE	1
34	BB040	CORD STOPPER	1
35	82213	PAN HEAD SCREW 6 X 15	2
36	81246	TOOTHED LOCK WASHER 6	1
37	19722	TUBE HOOK	1
38	82201	PAN HEAD SCREW 6 X 10	1
SET	BS260	SWITCH COMPLETE (22-24)	1
SET	BS741	OVERLOAD PROTECTOR COMPLETE (13-17)	1

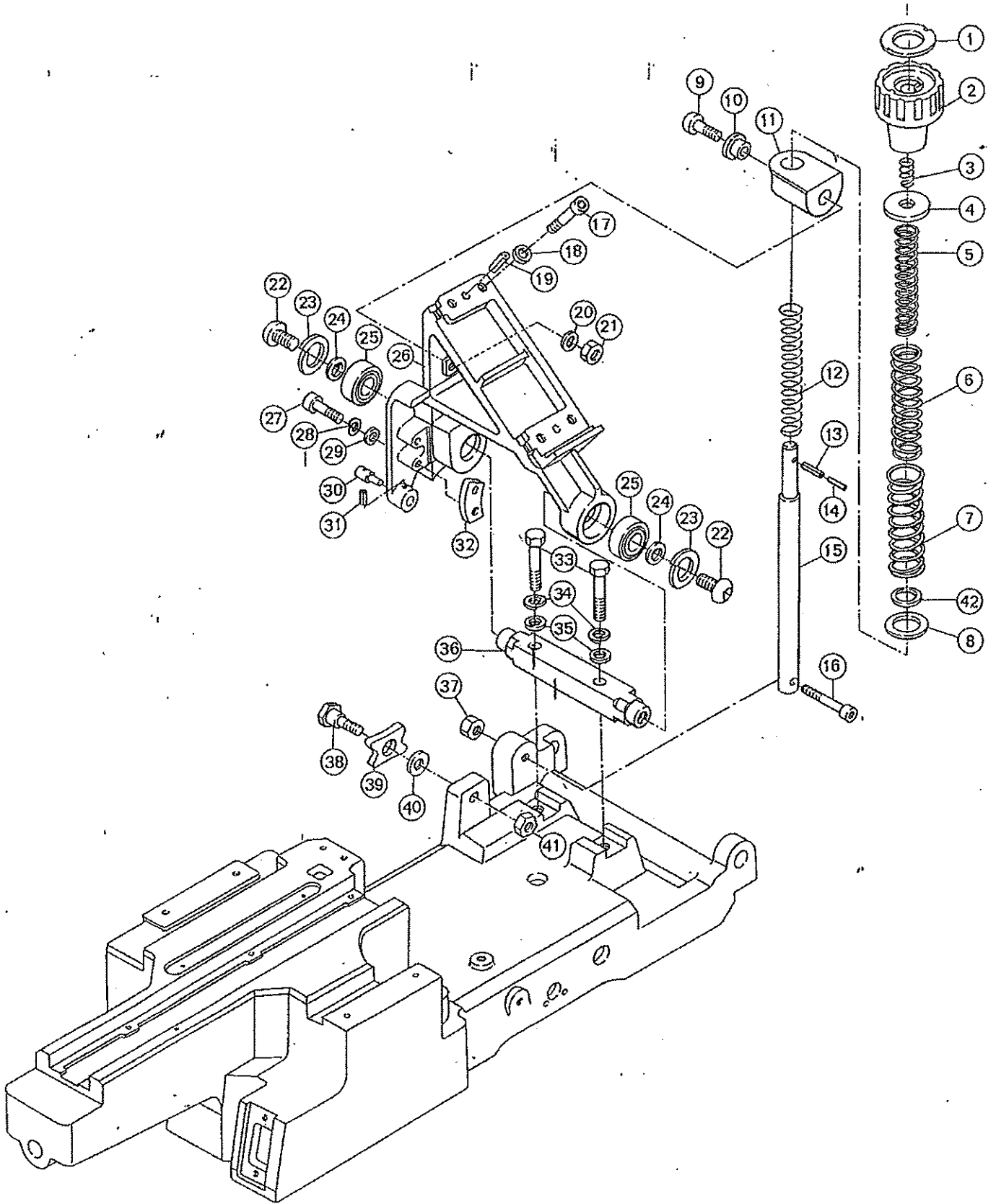
MODEL BAND SAW BEAVER 6/6F FLAT VISE



FLAT VISE

NO.	CODE. NO.	PARTS NAME	QTY
1	80125	STOP BOLT 16 X 65	2
2	81153	WASHER 16	2
3	BS291	CASTER	2
4	BS292	CASTER COLLAR	2
5	81153	WASHER 16	2
6	81087	U NUT 16	2
7	45473	STOP BOLT	1
8	81147	WASHER 8	1
9	70204	HOOK CHAIN	1
10	81063	HEX NUT 8	1
12	80057	STOP BOLT 10 X 40	1
13	81115	SPRING WASHER 10	1
14	81149	WASHER 10	1
15	BB102	FLAT VISE R	1
16	80056	STOP BOLT 10 X 35	1
17	81115	SPRING WASHER 10	1
18	81149	WASHER 10	1
19	80057	STOP BOLT 10 X 40	1
20	81149	WASHER 10	1
21	81115	SPRING WASHER 10	1
22	45442	COLLAR	1
23	BS361	FLAT VISE F	1
24	BS441	SCALE PLATE	1
25	BS337	WISE PLATE	2
26	80161	HEX BOLT 6 X 10	4
27	BS362	SLIDER	1
28	45470	PIN	1
29	83355	PLATE TACK 4 X 4.8	3
30	70574	BAR GRIP KDC-10	1
31	BS343	GUIDE ROD	1
32	45444	FEED SCREW GUIDE	1
33	83067	SPRING PIN 3.5 X 12	1
34	BB101	FLAT VISE BODY	1
35	45450	CLAMP HANDLE	1
36	84326	OILLESS DRY METAL 70B-1525	1
37	BS320	SUPPORT BLOCK	1
38	70152	SPRING WASHER 6	2
39	80165	HEX BOLT 6 X 18	2
40	BB104	TIGHTENING PLATE	1
43	81113	SPRING WASHER 6	2
44	80170	HEX BOLT 6 X 40	2
45	BS346	FEED SCREW SUPPORT	1
46	BS344	FEED SCREW	1
47	83039	SPRING PIN 6 X 25	1
48	84326	OILLESS DRY METAL 70B-1525	1
50	BS873	STOPPER	1
51	80168	HEX BOLT 6 X 30	2
52	81113	SPRING WASHER 6	2
53	81066	HEX NUT 6	1
54	80019	STOP BOLT 6 X 25	1
55	81137	CORRUGATED WASHER 14	1
56	81170	THRUST WASHER AS1528	1
57	BS437	GUIDE RAIL A	1
58	BS438	GUIDE RAIL B	1
59	80161	HEX BOLT 6 X 10	6

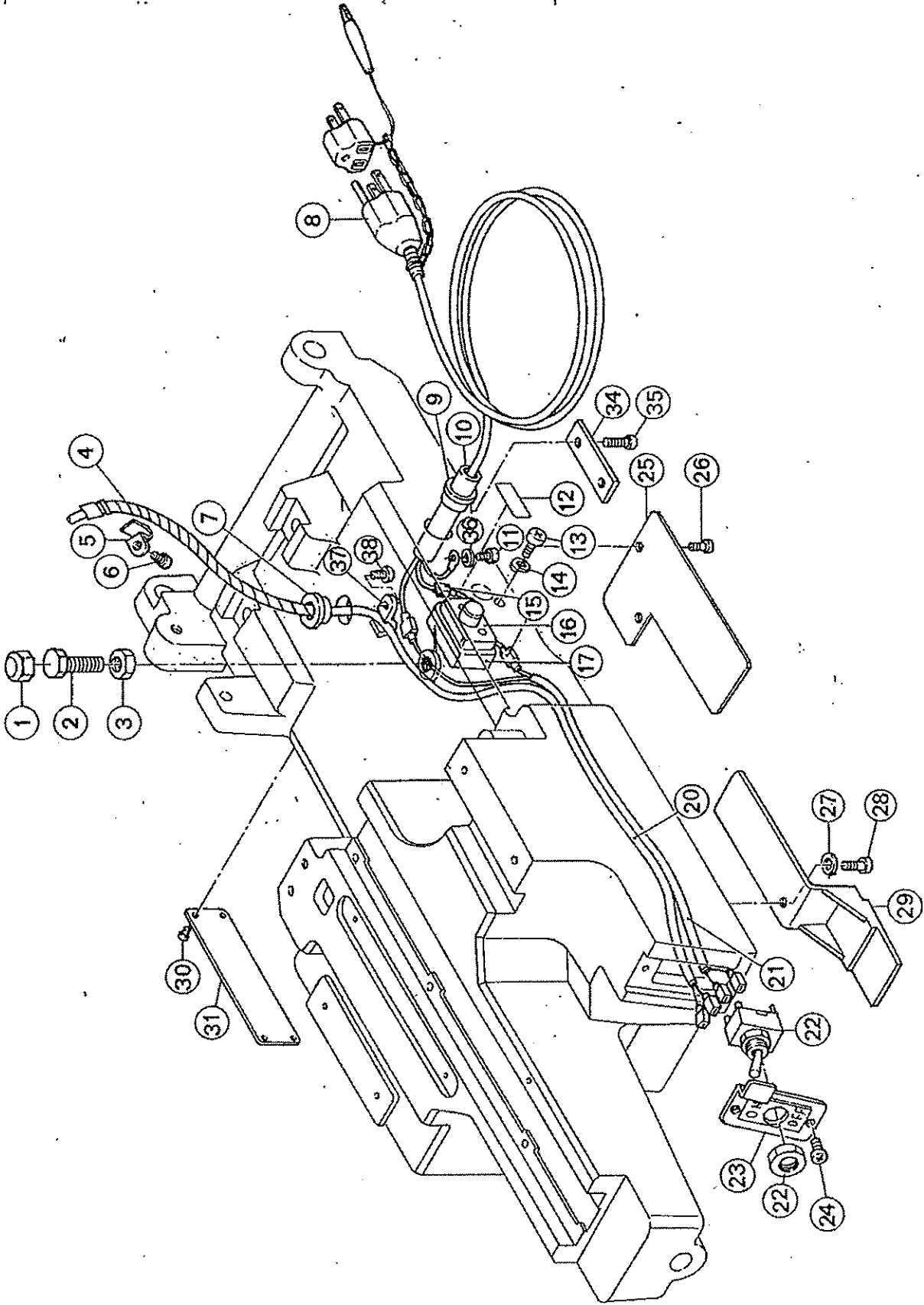
MODEL BAND SAW BEAVER 6/6F ADJUSTMENT SYSTEM (FLAT VISE)



ADJUSTMENT SYSTEM (FLAT VISE)

NO.	CODE	PARTS NAME	QTY
1	BB032	ADJUSTMENT-KNOB STICKER	1
2	BS322	ADJUSTMENT KNOB	1
3	BS287	ADJUSTMENT KNOB SET SPRING	1
4	BB068	SPRING STOPPER	1
5	BB034	INNER SPRING	1
6	BB035	MIDDLE SPRING	1
7	BB033	OUTER SPRING	1
8	BB041	SPRING STOPPER	1
9	82317	HEX BOLT 10 X 35	1
10	BB039	BRACKET COLLAR	1
11	BB011	SLIDE ROD BRACKET	1
12	BS089	SPRING STOPPER	1
13	83035	SPRING PIN 6 X 18	1
14	83067	SPRING PIN 3.5 X 12	1
15	BS286	SLIDE ROD	1
16	80182	HEX BOLT 8 X 45	1
17	80178	HEX BOLT 8 X 25	4
18	81249	SPRING WASHER 8	4
19	83082	SPRING PIN 5 X 35	2
20	70150	WASHER 10	1
21	81024	HEX NUT 10	1
22	82257	BUTTON BOLT 8 X 20	2
23	81115	SPRING WASHER 10	2
24	81149	WASHER 10-22	2
25	84136	BALL BEARING 6003ZZ	2
26	BB009	SHAFT SUPPORT	1
27	80169	HEX BOLT 6 X 35	2
28	81113	SPRING WASHER 6	2
29	81225	WASHER 6	2
30	BB010	STOPPER PIN	1
31	83015	SPRING PIN 4 X 20	1
32	BS309	CURB PLATE	1
33	80060	STOP BOLT 10 X 55	2
34	81115	SPRING WASHER 10	2
35	81149	WASHER 10	2
36	BB012	DATUM SHAFT	1
37	81064	HEX NUT 8	1
38	BS056	STOPPER BOLT	1
39	BS055	STOPPER	1
40	BS057	STOPPER COLLAR	1
41	81041	U NUT 10	1
42	81153	WASHER 16	1

MODEL BAND SAW BEAVER 6/6F SWITCH (FLAT VISE)



SWITCH (FLAT VISE)

NO.	CODE	PARTS NAME	QTY
1	BS051	STOPPER RUBBER	1
2	80055	STOP BOLT 10 X 30	1
3	81024	HEX NUT 10	1
4	85469	SPIRAL TUBE TP-9	1
5	19722	TUBE HOOK	1
6	82201	PAN-HEAD SCREW 6 X 10	1
7	70605	BUSHING NB15	1
8	BB028	POWER CORD	1
9	70605	BUSHING NB15	1
10	85409	VINYL HOSE 12-14	1
11	88899	PAN HEAD SCREW 6 X 8	1
12	BS341	RESET BUTTON STICKER	1
13	82177	PAN HEAD SCREW 4 X 12	2
14	81111	SPRING WASHER 4	2
15	BS370	LEAD	2
16	87707	OVER LOAD PROTECTOR	1
17	BS285	PROTECTOR COVER	1
20	BB027	SWITCH CORD	1
21	BS368	PROTECTOR CORD	1
22	87178	SWITCH	1
23	BS364	SWITCH PLATE	1
24	82201	PAN HEAD SCREW 6 X 10	2
25	BS436	PROTECTOR BACK PLATE	1
26	82201	PAN HEAD SCREW 6 X 10	3
27	81155	WASHER 6	1
28	82201	PAN HEAD SCREW 6 X 10	1
29	BS327	SWITCH BACK PLATE	1
30	83352	PLATE TACK 2 X 4.8	4
31	BB108	MACHINE PLATE	1
34	BB040	CORD STOPPER	1
35	82213	PAN HEAD SCREW 6 X 15	2
36	81246	TOOTHED LOCK WASHER 6	1
37	19722	TUBE HOOK	1
38	82201	PAN HEAD SCREW 6 X 10	1
SET	BS260	SWITCH COMPLETE (22-24)	1
SET	BS741	OVERLOAD PROTECTOR COMPLETE (13-17)	1