

Main feature of Beaver Saw series

Easy, fast and straight pipe cutting despite of Small body.

Purpose

For cutting steel pipe, lining pipe, cast iron pipe, stainless steel pipe, copper pipe, aluminum pipe, spiral pipe and various plastic pipes.

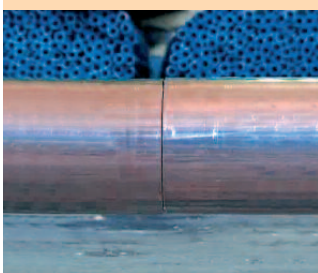


High speed cut of large diameter pipes



- No need to move heavy pipes because the machine takes hold of pipes and presses itself during cut for easy process.

Straight cut



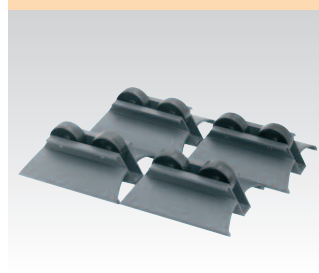
- Beaver Saw fits firmly on the pipe and the saw blade is always in the correct position. It ensures the cut edges straight to be ready for welding.

Versatile



- Very wide cutting range.
- All commonly used pipe materials can be cut.

Pipe support



- Long and large diameter pipes are easily set to cut.

Super small body and lightweight



- Convenient to carry to work site and take measurements of pipe.

Safe working environment



- Differ from other machines Beaver Saw operates with minimum of sparks to assure your safety.

Easy to use even in confined spaces



- Can be used at tight place.

Handy and quick



- Simple to cut small diameter pipes in exact length on a bench. Saw blade can be changed easily and quickly.

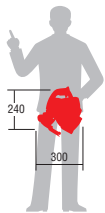
Beaver Saw 170 Eco

PAT.

Ø15 ~ 170mm



With carrying bag as standard accessories.



- Strong clamp allows for exactly straight cut.
- Small size and lightweight, only 5.8kg suits for carrying to work site.
- High speed cut of pipes with diameter up to 170mm.

Item	Beaver Saw 170 Eco
Code No.	EX1702
Cutting capacity	Ø15mm ~ 170mm
Max, pipe wall thickness	Steel: 6mm, Stainless steel: 2mm, plastics: 14mm
Blade cutting width max	2mm
Motor	220-230V 1010W 50/60Hz
Intermittent operation	25%
Blade speed	4000rpm (no load)
Weight	5.8kg
Dimensions	(L)300 x (W)220 x (H)240mm
Standard accessories	Carrying case, TCT blade B140, Cutting supports x4, Hex socket key 2mm, 5mm, safety glasses, operating instructions

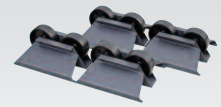
Beaver Saw 170E Eco

PAT.

Ø15 ~ 170mm



With carrying bag as standard accessories.



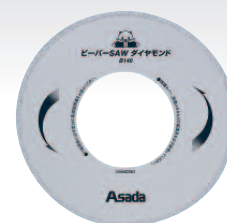
Speed control dial



- Strong clamp allows for exactly straight cut.
- Small size and lightweight, only 5.8kg suits for carrying to work site.
- High speed cut of pipes with diameter up to 170mm.

Item	Beaver Saw 170E Eco
Code No.	EX1702E
Cutting capacity	Ø15mm ~ 170mm
Max, pipe wall thickness	Steel: 8mm, Stainless steel: 6mm, plastics: 14mm
Blade cutting width max	2mm
Motor	220-230V 1200W 50/60Hz
Intermittent operation	25%
Blade speed	1600 ~ 3500rpm (no load)
Weight	5.8kg
Dimensions	(L)300 x (W)220 x (H)240mm
Standard accessories	Carrying case, TCT blade B140, Cutting supports x4, Hex socket key 2mm, 5mm, safety glasses, operating instructions

Beaver Saw Blades



- Special designed only for Beaver Saw, keeping sparks and chips minimum.
- Remain no burns and finish with smooth cutting surface.
- The best for sharp cut.

Items	TCT Saw Blade B140	TCT Saw Blade B150	Cermet Saw Blade B140	Diamond Disk B140
Code No.	EX10486	EX10488	EX10496	EX10491
Cutter size	Outer diameter	140mm	140mm	140mm
	Inter diameter	62mm	62mm	62mm
Function	Steel pipe, lining steel pipe, copper pipe, aluminum	Plastic pipe Note: unsuitable for Beaver saw 220, not	Ideal for cutting long life pipe and stainless steel	Cast iron pipe

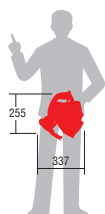
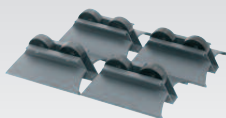
Beaver Saw 220A

PAT.

Ø20 ~ 220mm **CE**



With carrying bag as standard accessories.



- Strong clamp allows for exactly straight cut.
- Small size and lightweight, only 8.9kg suits for carrying to work site.
- High speed cut of pipes with diameter up to 220mm.

Item	Beaver Saw 220A
Code No.	EX220A
Cutting capacity	Ø20mm ~ 220mm
Max, pipe wall thickness	Steel: 8mm, Stainless steel: 6mm, plastics:13mm
Blade cutting width max	2mm
Motor	220-230V 1600W 50/60Hz
Intermittent operation	25%
Blade speed	4000rpm (no load)
Weight	8.9kg
Dimensions	(L)337 x (W)225 x (H)255mm
Standard accessories	Carrying case, TCT blade B140, Cutting supports x4, Hex socket key 2mm, 5mm, safety glasses, operating instructions

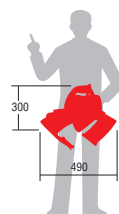
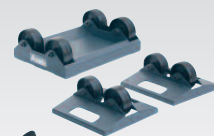
Beaver Saw 360

PAT.

Ø75 ~ 360mm **CE**



With carrying bag as standard accessories.



- Strong clamp allows for exactly straight cut.
- Small size and lightweight, only 14.3kg suits for carrying to work site.
- High speed cut of pipes with diameter up to 360mm.

Item	Beaver Saw 360
Code No.	EX360
Cutting capacity	Ø75mm ~ 360mm
Max, pipe wall thickness	Steel: 8mm, Stainless steel: 6mm, plastics:20mm
Blade cutting width max	2mm
Motor	220-230V 1600W 50/60Hz
Intermittent operation	25%
Blade speed	4000rpm (no load)
Weight	14.3kg
Dimensions	(L)490 x (W)220 x (H)300mm
Standard accessories	Carrying case, TCT blade B140, Cutting supports x3, Hex socket key 2mm, 5mm, safety glasses, operating instructions

Cut Aid



- Can cut Full Thread with Beaver Saw 170Eco/ 170E Eco and 220A.
- Leave cutting edge strait to be ready for immediate use.

Item	Cut Aid
Code No.	EX018
Capacity	5/16", 3/8", 1/2" / 6, 8, 10, 12mm