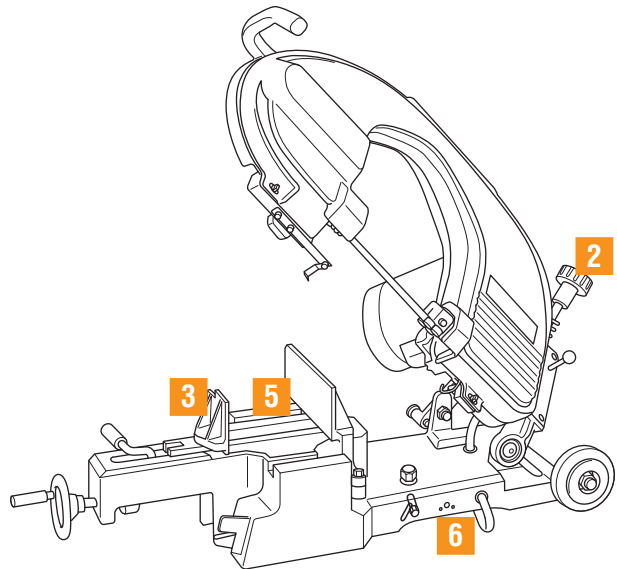
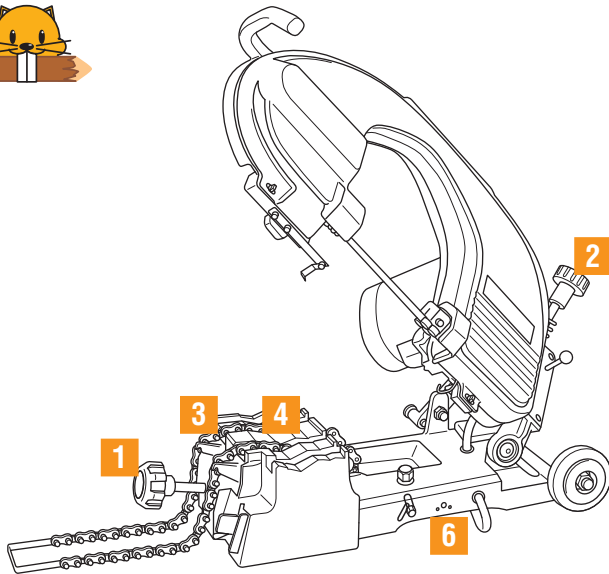


Characteristics of band saw series

Professionally right angle and high speed cut for cutting steel pipe and section steel.

Purpose

For cutting steel pipe, lined water pipe, conduit, poly vinyl pipe, cast iron pipe, stainless steel pipe, steel materials, square pipe, round bar, aluminum frame, etc.



Safety and harmlessness

- Cutting safely and harmlessly without sparks, cutting dust and noise.

High speed cut

- High speed cut for increasing productivity of your work.

1 Easy clamp system (chain vice)



- Strong quick clamp enables to fast forward. (Beaver 6)

2 Precision cutting adjustment device



- Easily make change with precision cutting adjustment device according to material of pipes.

3 Cut at right angle (chain, flat vice)



- Ideal for precision cutting at right angle.

4 Bundle cut (chain vice)



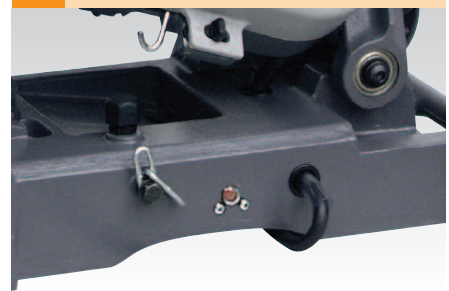
- Possible to cut in bundle of same material pipe. (Beaver 6)

5 Angle cut (flat vice)



- Possible to cut at an angle of 45 degrees. (Beaver 6F)

6 Overload protection device



- Equipped with overload protection device to prevent motor from incineration.

Band Saw Beaver 6

PAT.

~ Ø180mm

Chain vice



- Highly appreciated with precision cut, especially at right angle.
- Extremely high speed cut.
- Easy to replace saw blade from the front.
- Single action saw blade tension system.
- Quick clamp system with power bunding.
- Equipped with overload protection device.

Standard saw blade

| | |
|----------|------------------|
| Item | 14 TPI HSS blade |
| Code No. | 70114 |

| Item | Band Saw Beaver 6 | |
|----------------------|---|-------------|
| Code No. | BB003 | |
| Cutting Capacity | Angle | 90° |
| | Steel pipe | Ø180mm |
| | H steel | 150mmx150mm |
| | Square pipe | 150mm |
| | Round bar | Ø80mm |
| Weight | 42kg | |
| Dimensions | (L)975x(W)415x(H)415mm | |
| Motor | Condenser 100V (Voltage made to order) 200W 50/60Hz | |
| Standard accessories | 14 TPI HSS blade (1 pce) | |

Band Saw Beaver 6F

PAT.

~ Ø180mm

Flat vice



- Highly appreciated with precision cut, especially at right angle.
- Extremely high speed cut.
- Easy to replace saw blade from the front.
- Single action saw blade tension system.
- Quick clamp system with power bunding.
- Equipped with overload protection device.

Standard saw blade

| | |
|----------|------------------|
| Item | 14 TPI HSS blade |
| Code No. | 70114 |

| Item | Band Saw Beaver 6F | | |
|----------------------|---|-------------|-------|
| Code No. | BB103 | | |
| Cutting Capacity | Angle | 90° | 45° |
| | Steel pipe | Ø180mm | Ø77mm |
| | H steel | 150mmx150mm | - |
| | Square pipe | 150mm | 75mm |
| | Round bar | Ø80mm | Ø75mm |
| Weight | 47kg | | |
| Dimensions | (L)975x(W)415x(H)415mm | | |
| Motor | Condenser 100V (Voltage made to order) 200W 50/60Hz | | |
| Standard accessories | 14 TPI HSS blade (1 pce) | | |

Band Saw 125

~ Ø130mm

Chain vice



- Proud of high speed and precision cut.
- Easy to replace saw blade from the front.
- Single action saw blade tension system.
- Contour function makes it possible to be widely used.
- Frame falling down protection system assures safe work.
- Equipped with overload protection device.

Standard saw blade

| | |
|----------|------------------|
| Item | 14 TPI HSS blade |
| Code No. | 88915 |

| Item | Band Saw 125 | |
|----------------------|---|-------------|
| Code No. | BS125 | |
| Cutting Capacity | Angle | 90° |
| | Steel pipe | Ø130mm |
| | H steel | 100mmx100mm |
| | Square pipe | 100mm |
| | Round bar | Ø60mm |
| Weight | 30kg | |
| Dimensions | (L)740x(W)390x(H)330mm | |
| Motor | Condenser 100V (Voltage made to order) 200W 50/60Hz | |
| Standard accessories | 14 TPI HSS blade (1 pce) | |

Band Saw 12F

~ Ø120mm

Flat vice



- Proud of high speed and precision cut.
- Easy to replace saw blade from the front.
- Single action saw blade tension system.
- Contour function makes it possible to be widely used.
- Quick clamp system helps to set pipe quickly.
- Frame falling down protection system assures safe work.
- Equipped with overload protection device.

Standard saw blade

| | |
|----------|------------------|
| Item | 14 TPI HSS blade |
| Code No. | 88915 |

| Item | Band Saw 12F | | |
|----------------------|---|-------------|-------|
| Code No. | BS12F | | |
| Cutting Capacity | Angle | 90° | 45° |
| | Steel pipe | Ø120mm | Ø50mm |
| | H steel | 100mmx100mm | - |
| | Square pipe | 100mm | 50mm |
| | Round bar | Ø60mm | Ø50mm |
| Weight | 32kg | | |
| Dimensions | (L)740x(W)390x(H)330mm | | |
| Motor | Condenser 100V (Voltage made to order) 200W 50/60Hz | | |
| Standard accessories | 14 TPI HSS blade (1 pce) | | |

Band Saw 222

PAT.

~ Ø220mm

Chain vice



- Small style, light weight and castors makes transportation easily.
- Guide arm allows for right angle cut.
- Simple to replace saw blade with New Tension Handle.
- Frame falling down protection system assures safe work. Equipped with overload protection device.

| Standard saw blade | |
|--------------------|------------------|
| Item | 14 TPI HSS blade |
| Code No. | 70446 |

| Item | Band Saw 222 | |
|----------------------|---|-------------|
| Code No. | BS222 | |
| Angle | 90° | |
| Cutting Capacity | Steel pipe | Ø220mm |
| | H steel | 200mmx150mm |
| | Square pipe | 170mm |
| | Round bar | Ø100mm |
| Weight | 53kg | |
| Dimensions | (L)1050x(W)360x(H)500mm | |
| Motor | Condenser 100V (Voltage made to order) 250W 50/60Hz | |
| Standard accessories | 14 TPI HSS blade (1 pce) | |

Band Saw 22F

PAT.

~ Ø220mm

Flat vice



- Small style, light weight and castors makes transportation easily.
- Guide arm allows for right angle cutting.
- Simple to replace saw blade with New Tension Handle.
- Frame falling down protection system assures safe work.
- Quick clamp system helps to set pipe quickly.

| Standard saw blade | |
|--------------------|------------------|
| Item | 14 TPI HSS blade |
| Code No. | 70446 |

| Item | Band Saw 22F | |
|----------------------|---|---------------------------|
| Code No. | BS222 | |
| Angle | 90° | 45° |
| Cutting Capacity | Steel pipe | Ø220mm / Ø115mm |
| | H steel | 200mmx150mm / 125mmx125mm |
| | Square pipe | 170mm / 125mm |
| | Round bar | Ø100mm / Ø100mm |
| Weight | 62kg | |
| Dimensions | (L)1060x(W)360x(H)500mm | |
| Motor | Condenser 100V (Voltage made to order) 250W 50/60Hz | |
| Standard accessories | 14 TPI HSS blade (1 pce) | |

Band Saw 32F

~ Ø320mm

Flat vice



- 100V, potable design, dry type machine ideals for active pipe work.
- Possible to cut up to 300A even with compact size.
- Oil dumper system makes it possible to cut at right angle of large diameter pipe.
- Quick clamp system helps to set pipe quickly.

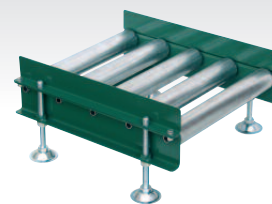
| Standard saw blade | |
|--------------------|------------------|
| Item | 10 TPI HSS blade |
| Code No. | BS905 |

| Item | Band Saw 32F | |
|----------------------|---|---------------------------|
| Code No. | BS324 | |
| Angle | 90° | 45° |
| Cutting Capacity | Steel pipe | Ø320mm / Ø195mm |
| | H steel | 300mmx300mm / 200mmx200mm |
| | Square pipe | 300mm / 200mm |
| | Round bar | Ø150mm / - |
| Weight | 114kg | |
| Dimensions | (L)1530x(W)620x(H)640mm | |
| Motor | Condenser 100V (Voltage made to order) 300W 50/60Hz | |
| Standard accessories | 10 TPI HSS blade (1 pce) | |

Pipe support for Band Saw



| Item | Pipe support | |
|-----------------|---|-------|
| Code No. | BS620 | |
| Height | Max | 165mm |
| | Min | 105mm |
| Suitable Models | 125, 12F, Beaver 6, Beaver 6F, 222, 22F | |



| Item | Pipe support for 32F | |
|-----------------|----------------------|-------|
| Code No. | BS825 | |
| Height | Max | 295mm |
| | Min | 105mm |
| Suitable Models | Band Saw 32F | |